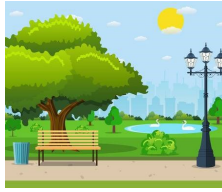


Playing Field and Park Update



We have recently secured a £3000k grant from the Better Derbyshire Dales Fund towards the new path around the playing field. The new play equipment has been ordered and we hope to have the playing field refurbished within the coming months.

Save the date for our next fundraiser! On Saturday the 7th September we will be hosting a Bingo evening at the Brailsford Institute. Doors open at 7pm, all welcome. Look out for more details coming soon.



Places available for 2 - 4 year olds at Brailsford Pre-school from September. We run sessions Monday to Friday during term times from the Brailsford Institute. We are Ofsted registered and provide early years education through the EYFS framework.

To book a free taster session for September or to make an appointment to come and meet us call 07718 424664. Some sessions fill quickly so ensure you contact us early to secure a place for your child.

www.brailsfordpreschool.co.uk



Friends of Brailsford Institute Group

We are always looking for volunteers to help with maintenance, gardens, events etc and generally help to keep the village hall running and available for the village. We've already painted the outside black and white and it's looking much smarter. We want to tackle some of the issues in the grounds later in the year. If you are interested please contact dianeminshall@hotmail.com/01335 360387. You can also contact Diane to book the hall. See how fantastic it looks when decorated for a recent wedding and plenty of outside space too.



Overgrown Hedges and Vegetation

Unfortunately we receive constant complaints about overgrown hedges and vegetation blocking and narrowing pavements especially along the A52.

Please ensure you cut back all vegetation to your boundary line to ensure the safety of pedestrians and cars pulling out.

You can report any concerns directly to Derbyshire County Council using the following link:-

<https://apps.derbyshire.gov.uk/applications/do-it-now/road-maintenance.asp>

Flooding

Concerns are ongoing about flooding in the Parish & especially more recently along Luke Lane. We are collating evidence for this in order to get the appropriate authorities to do something about it.

If you do see any flooding anywhere in the Parish please take pictures and report it to the Parish Clerk detailing where and when it was taken. We will be reporting this to Derbyshire Dales District Council/Derbyshire County Council and Severn Trent.

Please email:-

clerk@brailsfordandednastonpc.org.uk

ARE YOU READY FOR A NEW CHALLENGE?

1st Osmaston, Brailsford and Shirley Scout Group



1st Osmaston, Brailsford and Shirley Scout Group Report Summer 2019

The 1st Osmaston, Brailsford and Shirley Scout Group and affiliated Cobra Explorer Group (1st OBS for short) run activities for young people throughout the year, with Brailsford Institute as the main base. Activities may be indoors – for example learning circus skills, outdoor – sailing and archery, creative – cookery and card making, and educational – visiting the fire station. We have 4 Sections – Beavers at ages 6 and 7, Cubs at 8 and 9, Scouts 10 to 13, and Explorers 14 to 17 – so what we do is tailored to the age of the children. We also offer opportunities for active events away from home – whether it is the ‘Chilly Challenge’ in January involving a walk and a night camping in January or our week’s summer camp for the Scouts, this year in Northumberland. As part of the Scout Association we have access to a wide range of facilities and opportunities. Two years ago we held our Scout summer camp in Germany, meeting up with a German Scout Group we had met at Peak 2015 – the Derbyshire International Scouting Event. This summer 3 members of the group will be travelling to the World Scout Jamboree in West Virginia, USA, joining upto another 40000 attendees.

Being part of 1st OBS Scouts is fun for all the young people, and the adult volunteers who run it as well. All young people in the area between 6 and 17 can apply to join the group. We’re keen to grow our group of adult helpers. There is a minimum number of helpers needed to run the group, but having a bigger pool of helpers allows us to do a wider range of activities. Many of our helpers are parents of the young people, but not all and this certainly isn’t a requirement. We need a range of skills and interests – You might be ideally suited to work with our Explorer Unit or you might prefer to help with fundraising or you might have a skill or an interest that you could share with one of the Sections. Commitment of time would vary from a few hours a year to a few hours a week, mostly in school term time, depending on what support you could offer.

If you’re interested in being part of the Group, either as a young person (any sex) joining a Section, a parent, or a volunteer helper, then please get in touch. Contact details are:

Eleanor Smith: eksmith2016@gmail.com, tel. 07762818173

Emma Cross: emma.cross1997@gmail.com, 07817472829

Belinda Swain : Belinda.Swain@btinternet.com, tel. 07837376396

Enjoy your summer – whether out and about like the Scouts – or staying close to home.

OSMASTON WIND BAND

Osmaston Wind Band have been established in this area for over 100 years. We are a local community band and currently have about 30 players—assorted woodwind (flute, clarinet, oboe. Saxophone) and brass (trumpet, trombone, euphonium, horn, and tuba) as well as a percussionist.

The band welcomes players of all ages and if you have some basic ability and would like to give us a try please contact us for further information (see contact details below).

We rehearse most Sunday evenings at the Brailsford Institute from 7.00 p.m, until 8.45p.m.

Throughout the year we play at a variety of events such as village fetes, garden parties, weddings, church services etc. If you organise this type of event and would like to provide some enjoyable musical entertainment then please get in touch. Our repertoire ranges from Beatles to Beethoven with film, theatre and jazz included as well!

So please come along and join us or find out more about us at www.osmastonwindband.org.uk

Terry 01332 558256 info@osmastonwindband.org.uk Tony 01335 330078 osmastonwindband@hotmail.co.uk